



Version: 20210427_01 | All | Church Guide

ALL.AMERICA

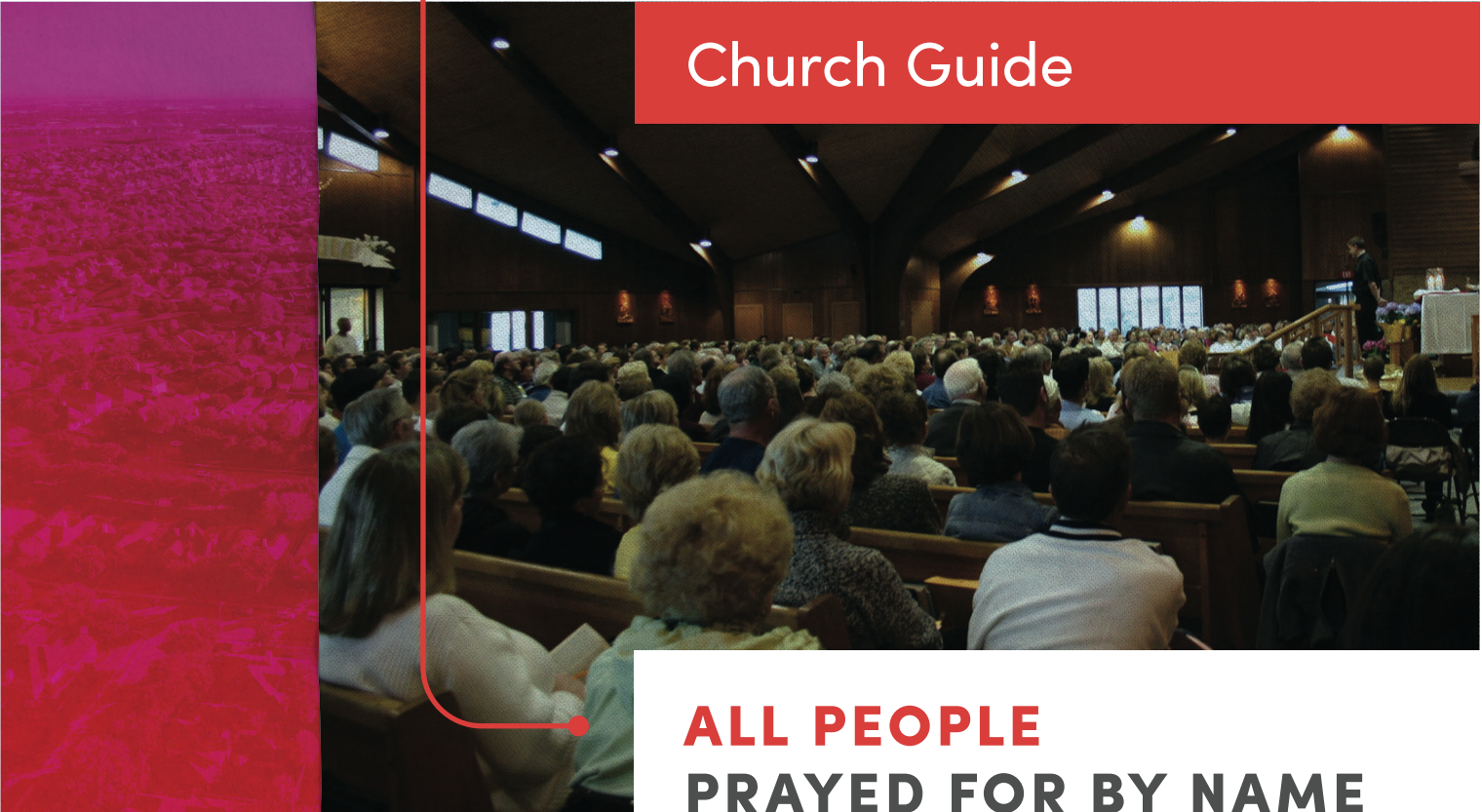
PO Box 838
Grandview • MO • 64030
info@allamerica.org

www.AllAmerica.org

An initiative of  **call2all**



Church Guide



**ALL PEOPLE
PRAYED FOR BY NAME
CONNECTED WITH JESUS**

All

TABLE OF CONTENT

- 4 | Why
- 6 | What
- 8 | How
 - 10 | Why Finish Lines
 - 12 | Every Christian
 - 13 | Pray+Connect
 - 14 | All.America App
 - 16 | Every Group
 - 17 | Every School
 - 18 | Every Church
 - 20 | Make a Plan
 - 21 | Launch | Sermon Notes
 - 22 | Finish Lines Overview
 - 24 | Assessment Sample
 - 26 | Assessment Template
 - 28 | Sample Timeline
 - 30 | Calendar Sample
 - 32 | Calendar Template
 - 34 | Every Community
- 35 | Resources

All

CHURCH RESOURCES

We have put together a range of tools to get your started.

CHURCH GUIDE

For church leaders to discover their “All”, assess the needs in their community and mobilize their congregation to reach out.

PARTICIPATION CARDS

A simple tool to get everyone to adopt their friends, family and neighbors in prayer and – using the free All.America app – work together to reach every person in America.

SERMON SERIES

A recommended 6 week series to dive deeper into discovering your “All” and the Finish Lines of the Great Commission.

SMALL GROUP GUIDE

Mobilizing small groups to pray for and connect with the people around them.



Check the website for resources:
www.AllAmerica.org/resources



All

EVERY COMMUNITY

We need to be intentional at a local level and work together to develop a plan. This will look different in every community but it always includes:

PARTNERSHIP

Working together - churches, networks, businesses and individuals.

CLEAR STRATEGIES

Defining your target area(s) and mobilizing believers to adopt all households and schools with prayer, compassion ministry, evangelism, Bible engagement and connecting to a Christian community.

GENEROUS GOSPEL SOWING

Personal, public and online evangelism.

A COMMON CALENDAR

Community-wide events and training.

HERE TO HELP

The All.America team, and our partners are ready to support and resource every step of the way.

To learn more, join us for one of our **Weekly Leader Calls**:
www.AllAmerica.org/calls



All

QUICK START GUIDE

A simple overview and where to start:

1 ■ KNOW YOUR COMMUNITY

Evaluate what is already in place and what is needed.

see pages 22–27



2 ■ MAKE A PLAN

Map out your area and agree a common calendar.

see page 18–20 / 28–33



3 ■ MOBILIZE

Inspire your people, utilize resources and connect with partner ministries.

see pages 12–17 / 21



4 ■ EQUIP

The All.America app makes it easy to pray for and connect with every person.

see pages 14–15



5 ■ DEPLOY

See your community transformed and track your goals to reach all.



Check the website for resources:
www.AllAmerica.org/resources

All

WHY?

There is a great move of God around the globe. **At the same time America is in rapid spiritual and moral decline.**

Many Christian leaders believe that God has granted us a **REPRIEVE**, a short period of time to **call the nation to repentance.**

REPENTANCE

*The repentance (metanoia) called for throughout the Bible is a summons to a **personal, absolute and ultimate unconditional surrender to God as Sovereign.***

*It is a call to turn from self-love to **obedient trust to live for God and his purposes.***

Location:

Check the website for partner resources:
www.AllAmerica.org/resources



EVANGELISM	BIBLE ENGAGEMENT	CHRISTIAN COMMUNITY	
			Q1
			Q2
			Q3
			Q4
			Q5
			Q6

MAKING A PLAN | CALENDAR OF EVENTS

[illegible]

OUR MANDATE IS CLEAR

He said to them, “Go into **all** the world and preach the gospel to **all** creation.” Mark 16:15

***"Therefore go and make disciples of **all** nations, baptizing them in the name of the Father and of the Son and of the Holy Spirit, and teaching them to obey **everything** I have commanded you."* Matt 28:19-20**

As we have fallen short of this mandate, our act of repentance must be **to do what God has commanded us - seek and save the lost**. We need to be intentional, strategic and in partnership, displaying the kind of genuine unity described in John 17 - using the new tools available to us and working off a common map.



ZERO

We are committed to the number
ZERO - **no-one left unreached.**

All

WHAT

The All initiative is a **comprehensive framework** to plan strategically to **see the Great Commission fulfilled in your area** with tools, expertise, and resources to help you. This will look different in every community.

This includes **all Jesus followers**, working together side by side regardless of creed, age or ethnicity.

It is **a movement of like-minded people, churches and ministries** with similar or very different passions, mandates and capabilities – but one common goal – so that **ALL may experience the saving grace of Jesus’ death and resurrection**.

Location:

Check the website for partner resources:
www.AllAmerica.org/resources



EVANGELISM	BIBLE ENGAGEMENT	CHRISTIAN COMMUNITY	
			Q1
	Bible Study Training		
			Q2
Church Block Party		Recruit for School Clubs	
Church Neighborhood Evangelism	Public Bible Reading		Q3
Social Media Evangelism		start School Clubs Small Group Training	
OCTOBER - Evangelistic outreaches/ all school districts	Youth Bible Study	Start Life Groups	Q4
Personal Evangelism trips & door-to-door	Apologetics Course (Open to Public)	Invite Sunday	Q5
Social Media Evangelism			Q6

MAKING A PLAN | CALENDAR OF EVENTS

MONTH	MOBILIZATION	PRAYER	COMPASSION
Jan	Church Leadership Team to meet & plan		
Feb			
March			
April	City-Wide Launch	Adopting Households (App) May 7-NDaP	
May			
June	Church Launch		
July			School Backpack Drive
Aug	Pray + Connect Training		
Sept		24hour Prayer	
Oct	Youth Group campaign		Church Potluck "Operation Christmas Child"
Nov			
Dec			
Jan	Prayer Event Promotion	City-Wide Prayer Event	"Postcards of Hope" Campaign
Feb			
March	Neighborhood Campaign for prayer walking		
April		Prayer Walking - all Neighborhoods	
May			
June			



To be truly effective we need to mobilize, equip and deploy God’s people in all areas of life – **Education, Family, Government, Religion, Media, Arts, Entertainment, Sports** and **Economics**.

The aim is not to replace the efforts of existing ministries, but to partner together with the common goal of transforming the nation with the Gospel of Jesus Christ.

No single person, ministry, business or community initiative can do this on their own.

**We can do this...
if we each do our part.**

HOW

All

PRAY+CONNECT WITH EVERY PERSON IN AMERICA

- **PRAY** for them **BY NAME**
- **CONNECT** with them **PERSONALLY**
- **CONNECT** them with **JESUS**
- **CONNECT** them with **THE BIBLE**
- **CONNECT** them with **A CHRISTIAN COMMUNITY**

Create a Calendar

Develop a comprehensive strategy to reach everyone in your local area.



PRAY+CONNECT Launch

Mobilize your congregation by sharing the vision and start adopting households, friends and family in prayer (using the All.America App).

Six week Sermon Series, Small Groups...

Dive deeper into discovering your "All" and the Finish Lines of the Great Commission.



Training

Equip your church – how to pray and connect, run school discipleship clubs, small groups at home or at work.

Local Finish Line Events

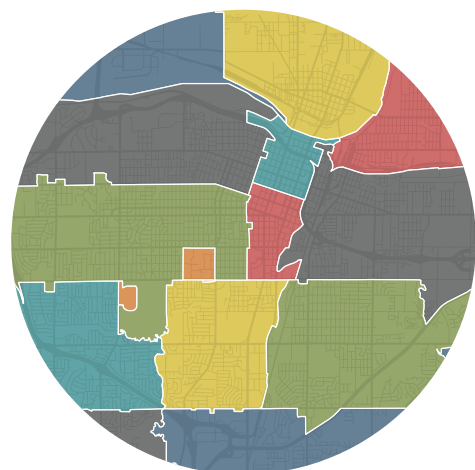
Participate in community-wide events, multiplying your PRAY+CONNECT efforts...



SAMPLE TIMELINE

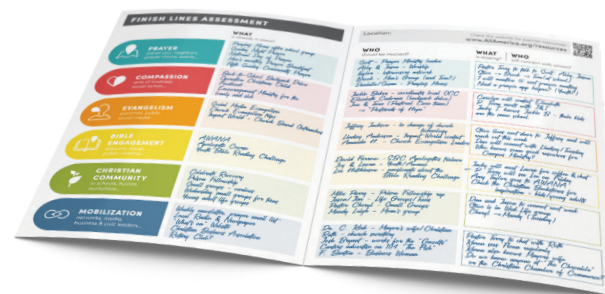
Making a Plan

Passionate and influential church and Christian marketplace leaders, a broad and diverse group representing your community, compile an overview of what's already in place, what is needed and who should be involved.



Define your Local Area(s)

You could use neighborhoods, school districts or other established boundaries.



Determine Local Finish Line Goals

Prayer • Compassion • Evangelism
Bible Engagement • Christian Community

Establish what events and initiatives to do.

ALL OF AMERICA

When we say the word “All” there are many implications. It means that we can not consider “some” as success, **we must measure and track what we do**, to confirm that we are actually reaching everyone.

THE NATION

Be part of the movement and collaborate with what God is doing to reach All of America.

YOUR STATE

Every County, City, ZIP Code, School District...

The vision of the All initiative is impossible to achieve alone. True transformation requires the whole Body of Christ to pray for and connect with everyone in our nation, now.



50 STATES

3,142 COUNTIES

13,506 SCHOOL DISTRICTS

7,151 COLLEGES/UNIVERSITIES

131,795 SCHOOLS (ELEMENTARY/MIDDLE/HIGH)

41,891 ZIP CODES

127 MILLION HOUSEHOLDS

328 MILLION PEOPLE

YOUR COMMUNITY

What would it look like if **every campus, every home, and every person in America** was prayed for by name and **engaged with the Gospel** multiple times?

All

WHY FINISH LINES?

The book of Hebrews tells us that every one of us is running a race. The question is:

What is the finish line?

Finish lines are a way to strategically focus on what Jesus commanded us to do.

Prayer, Compassion, Evangelism, Bible Engagement and Christian Community, as finish lines, give us a comprehensive framework to see this nation transformed and disciplined. What would happen if the Body of Christ came together around these common goals of the Great Commission?

Let us give ourselves fully to the task of reaching every person in all of America.

**TOGETHER WE COULD SEE
THE GREAT COMMISSION
FULFILLED IN OUR LIFETIME!**

Therefore go and make disciples of all nations, baptizing them in the name of the Father and of the Son and of the Holy Spirit, and teaching them to obey everything I have commanded you.

Matthew 28:19-20

And this gospel of the kingdom will be preached in the whole world as a testimony to all nations, and then the end will come.

Matthew 24: 14

Location:

Check the website for partner resources:

www.AllAmerica.org/resources



WHO

should be involved?

WHAT

is missing?

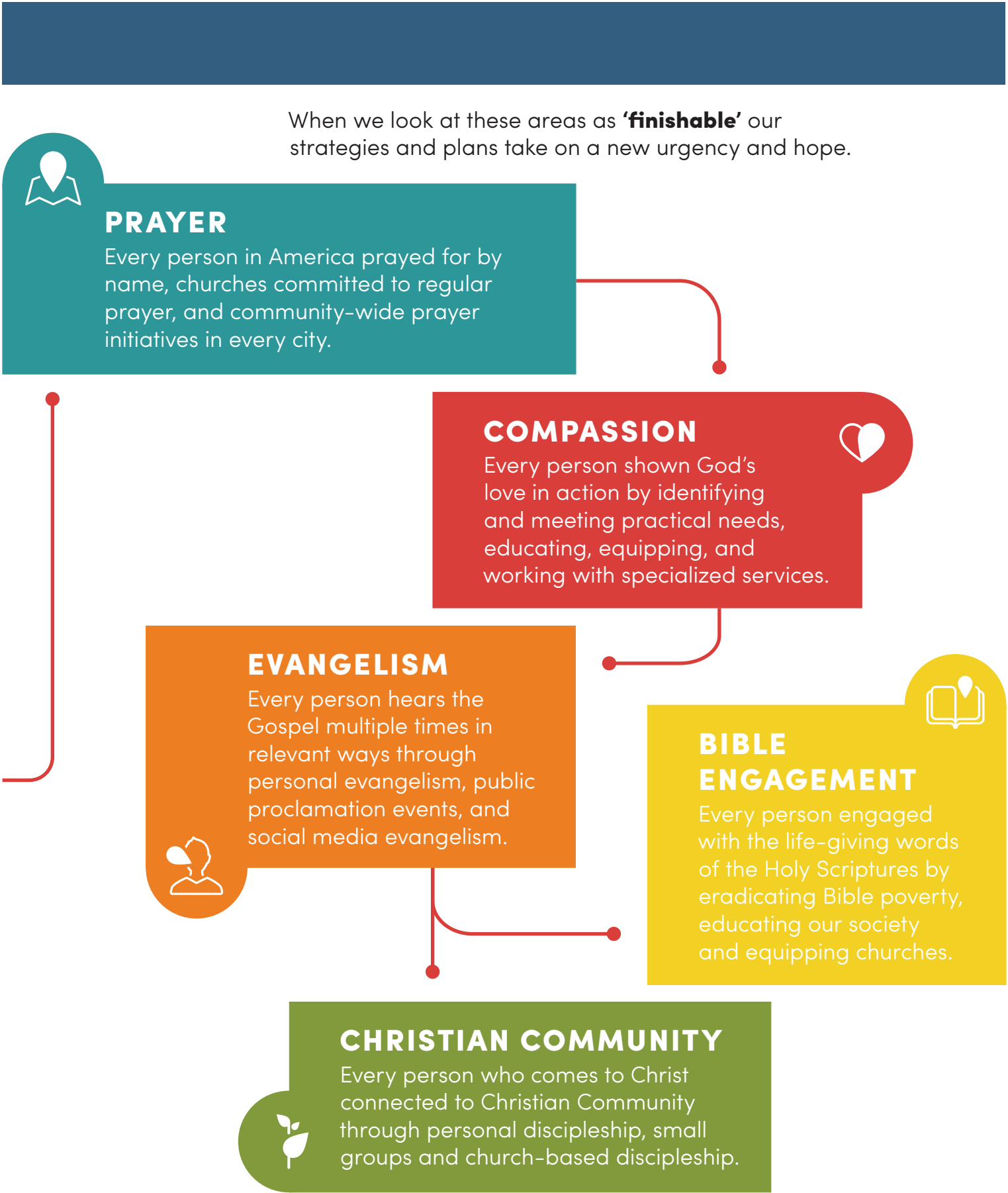
WHO

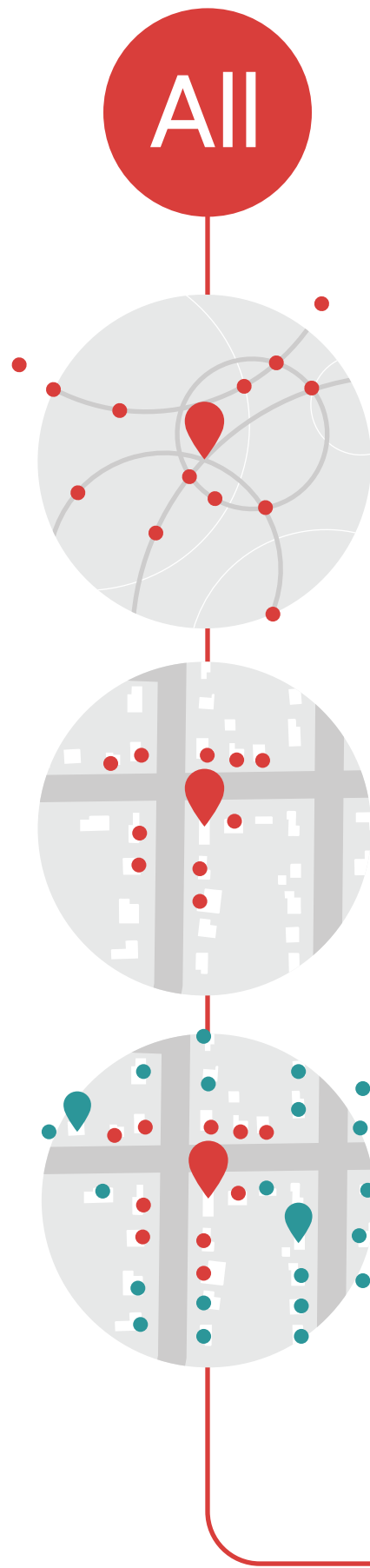
will connect with whom?

FINISH LINES ASSESSMENT

WHAT
is already in place?

 PRAYER adopt your neighbors, prayer chains, events...	
 COMPASSION acts of kindness, social action...	
 EVANGELISM personal, public, social media...	
 BIBLE ENGAGEMENT educate, equip, public reading...	
 CHRISTIAN COMMUNITY in schools, homes, workplace...	
 MOBILIZATION networks, media, business & civic leaders...	





EVERY CHRISTIAN

Everybody knows people who don't know Jesus yet.

THE PEOPLE YOU KNOW

You are with people every day – at work, in school, online, on the phone, having fun with friends and family – be intentional about praying for them by name and connecting with them regularly.

STEP OUTSIDE YOUR DOOR

Now, have a look up and down the street/hallway/stairs – those are more people you can pray for and connect with easily.

TOGETHER FOR ALL

Encourage your Christian neighbors to get involved, until there is no household left unadopted in your neighborhood.

EVERY CHRISTIAN?

Wouldn't it would be great if all of God's people were to rise to the challenge to adopt and pray for their friends, family and neighbors?

Even if just 1 of 3 evangelical/born-again Christians would adopt 10 households, every person in America would be covered multiple times.

Location:

Check the website for partner resources:
www.AllAmerica.org/resources



WHO

should be involved?

Scott - Prayer Ministry leader
Abby & Jason - Worship
Taylor - intercessors network
Brock - Men's Group (and Tom?)
Danielle/Susan - Praying Moms

Jackie Baker - coordinates local OCC
Elizabeth Cadorna (backpack drive)
Jon & Tara (Pastoral Care team)
→ "Postcards of Hope"

Jeffrey Jackson - in charge of church technology
Lindsey Anderson - Impact World contact
Amanda H. - Church Evangelism Leader

David Farrow - SBC Apologetics trainer
Joy & Laura - Youth/Awana
Lee Hutchinson - passionate about the Bible Reading Challenge

Mike Parry - Prison Fellowship rep
Jason/Jim - Life Groups/Teens
Pastor Cheryl - Small Groups
Mandy Leigh - Mom's group

Dr. C. Kirk - Mayor's wife/Christian
Ruth - church secretary
Josh Bryant - works for the "Gazette"
Carters advertise on 104 "The Fish"
F. Barton - Business Woman

WHAT

is missing?

Pastor Terry to talk to Scott, Abby, Jason
Steve → Brock → Tom (at school)
I will mention @ next prayer meeting
Need a prayer app helper? (Youth?)

Carolyn will contact Elizabeth
P. Terry meets with J&T
Jacky T. knows Jackie B - their kids are the same school.

Steve lives next door to Jeffrey and will reach out this week
Dan will connect with Lindsey/Tuesday
Who knows some good resources for Campus Ministry?

Jacky will meet Laura for coffee & chat
P. Terry will see Lee on Friday
Amy Taylor goes to AWANA
Check the Christian Bookstores for inspiration - kids/young adults

Dan and Jason to connect next week
Steve is in Wed. Life group
Cheryl → Mandy (Tuesday)

Pastor Terry to chat with Ruth
Karen sees Fiona regularly
Karen also knows Mayor's wife
Do we know anyone at "The Chronicle" or the Christian Chamber of Commerce?

FINISH LINES ASSESSMENT

WHAT

is already in place?



PRAYER

adopt your neighbors,
prayer chains, events...

*Praying Moms after school group
Sunday Night Prayer
National Day of Prayer
Men's monthly Prayer Breakfast
Fifth Sunday Community Prayer*



COMPASSION

acts of kindness,
social action...

*Back-to-School Backpack Drive
Operation Christmas Child
Foodbank
Encouragement Ministry for the
lonely and sick*



EVANGELISM

personal, public,
social media...

*Social Media Evangelism
Church Evangelism trips
Impact World - Church Based Outreaches*



BIBLE ENGAGEMENT

educate, equip,
public reading...

*AWANA
Apologetic Course
Youth Bible Reading Challenge*



CHRISTIAN COMMUNITY

in schools, homes,
workplace...

*Celebrate Recovery
Prison Fellowship
Small groups - various
Wednesday small groups for teens
Young adult life groups*



MOBILIZATION

networks, media,
business & civic leaders...

*Weekly newsletter, prayer email list
Local Radio & Newspaper
"What's on" Website
Christian Business Association
Rotary Club?*

PRAY+ CONNECT

PRAY+CONNECT directly responds to the human need
for relationship and is so simple everyone can do it.



ADOPT AND PRAY FOR YOUR FRIENDS AND NEIGHBORS

Until every person in your community is being prayed for by name.



CONNECT WITH THEM PERSONALLY

By nurturing relationships and meeting felt needs.



CONNECT THEM WITH JESUS

By being open about your relationship with Jesus and sharing
with them the good news of the Gospel.



CONNECT THEM WITH THE BIBLE

By engaging them with the life-giving words of the Holy Scriptures.



CONNECT THEM WITH A CHRISTIAN COMMUNITY

To help them grow in their new-found faith.

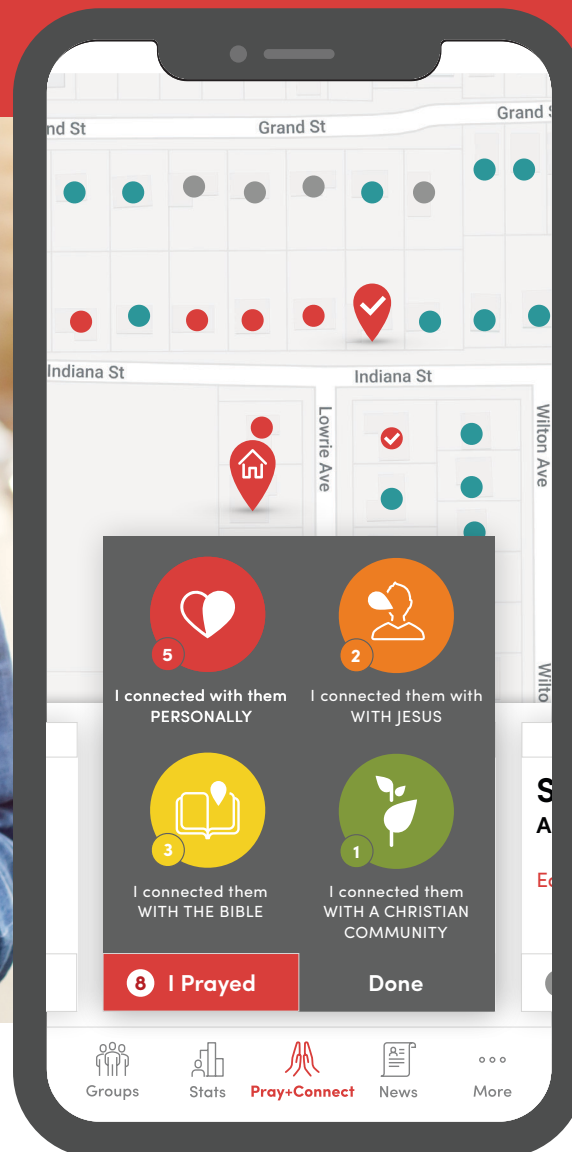
ALL.AMERICA APP

The All.America app is a simple, powerful tool to adopt, pray for and connect with your neighbors and friends. Working together to adopt every household, school and campus in America.

DOWNLOAD TODAY!



AllAmerica.org/App



EVERY DAY

Pray for your adopted people, add names and notes and track how you connect.

STATS

Tracked in real-time.

CUSTOM GROUPS

Create additional groups to pray for your family, friends, fellow students or co-workers.

WEB VERSION

Also available on your computer or tablet via any internet browser.



EVANGELISM

The goal is that every person in each community would hear the Gospel multiple times in clear and relevant ways through:

PERSONAL EVANGELISM

Be intentional with those you are praying for and connect with them on a personal level, leading to natural opportunities for Gospel conversations.

PUBLIC EVANGELISM

As a part of the strategy for the All initiative, the public proclamation of the Gospel via evangelistic campaigns should take place in multiple venues in your area.

ONLINE EVANGELISM

This layer of strategy will allow for every person in a specific area to be targeted with a Gospel message online – tailored to their demographic group.



BIBLE ENGAGEMENT

The goal is that everyone can engage with the life-giving words of the Holy Scriptures.

ERADICATE BIBLE POVERTY

The Bible must be made available to every person using relevant languages and formats.

EDUCATE SOCIETY

The foundational principles in the Bible for all areas of life – Education, Family, Government, Economics, Religion, Media, Arts, Entertainment and Sports.

EQUIP CHURCHES

Implement plans for personal and corporate Bible studies. This would include making the Scripture available to new Christians.



CHRISTIAN COMMUNITY

The goal is that all who come to Christ would be connected to a Christian Community.

ONE-ON-ONE

Effective discipleship happens through relationships. Everyone who prays and connects with those around them is already positioned to follow through with these new believers.

SMALL GROUPS

Some of the best settings for discipleship are home groups, workplace Bible studies, school clubs, and wherever you do life – pursuing Jesus together to encourage growth in godliness.

CHURCH GATHERED

This provides Christians opportunities to use their gifts and connects them to teaching, worship, and a greater network of personal and group discipleship movements.

All

FINISH LINES

1

2

3

4

5

As Christians define their personal mission field (neighbors, friends, family members, etc.) they adopt them in prayer and connect with them personally, with Jesus, the Bible and to a Christian community.



PRAYER

The goal is to prepare spiritually by increasing prayer in each community through:

ADOPTIONS

We must see every household and campus adopted in prayer and every person prayed for by name.

INITIATIVES

Sign-up for a prayer chain or a monthly day/half-day of prayer with the goal of praying for your community 24/7.

PRAYER EVENTS

Special times of coming together to pray for your community.



COMPASSION

The goal is to show God's love in action, connecting with and caring for those around us.

MEET NEEDS

Learning the needs of those around us will lead to natural opportunities to meet those needs and share the Gospel.

EDUCATE & EQUIP

The church is to be the hands and feet of Jesus to those in need around them and to affect lasting change in their lives.

SPECIALIZED SERVICES

Addressing issues like absentee parents, sex trafficking, and addictions of all kinds.

All

EASY-TO-USE APP

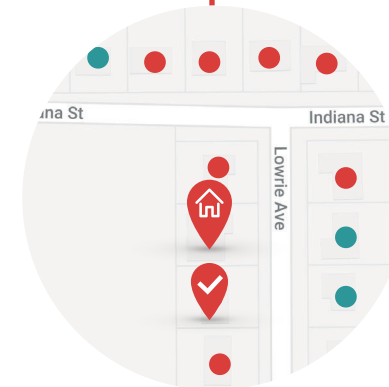
The app is a simple tool to enable us to finish the task together.

FIRST

Download the free app or use the web version.

Locate your home address.

Adopt households near you and create groups with the names of friends and family members. *(They will not see who adopted them.)*



EVERY DAY

Make it a habit to pray through the list daily and keep track by clicking "I prayed" every time - the app can remind you to pray.

Do the same as you connect with them and see all of America working together in real-time.

As you get to know your neighbors, you can add their names and notes. *(Only you can see that info, it is not shared.)*



MORE

Of course you can also add custom groups to pray for your family and friends who don't live nearby and invite others to pray with you.

We continue to add new features, like adopting schools, dashboards for local groups and churches to make you even more effective in praying for every person in your community by name and reaching them for Jesus.

All

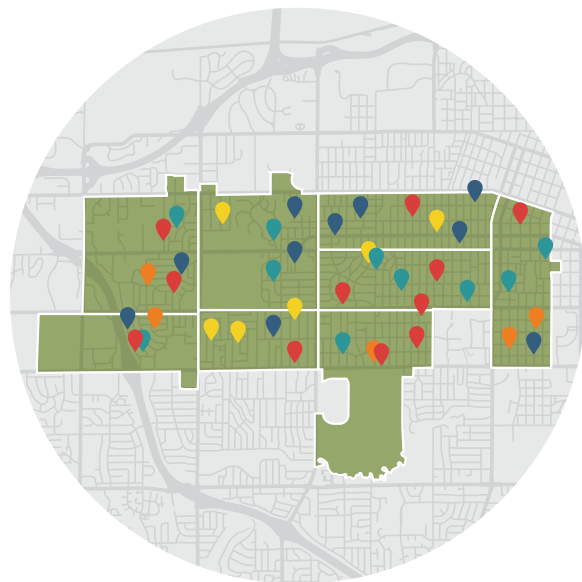
EVERY GROUP

It will take Christians everywhere to work together.

In every community there are affinity groups of Christians with similar passions and interests:

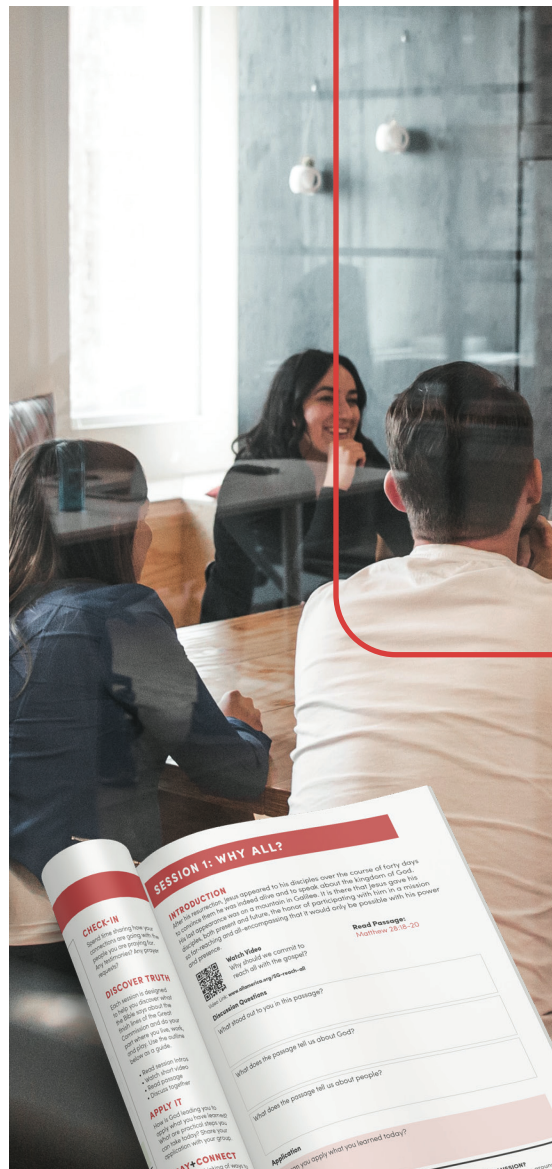
- ministries
- businesses
- networks
- Bible study/prayer groups
- youth groups ...

Imagine if they all worked together strategically to see every person prayed for.



There are some great resources for your group available online.

resources & downloads:
AllAmerica.org/resources



LAUNCH | SERMON NOTES

INTRODUCTION (10 MIN)

The **All.America initiative** is helping to bring together the Body of Christ to strategically reach every person in America. As a church, we want to focus on how we can do our part in God's mission. And we believe the vision of All.America is in line with what God has called us to do in this city, as we seek to reach those around us.

- Show All.America promo video
(youtube link: www.allamerica.org/shortpromo)
- Give personal endorsement

EXHORTATION (20 MIN)

Challenge your congregation about the value of reaching their neighbors for Christ. Share your **FAITH GOAL**.

Suggested Focuses:

- Great Commission - Matthew 28:19-20
- Great Commandment - Matthew 22:36-40
- Value of the Lost - Luke 15

INTRODUCE APP (10 MIN)

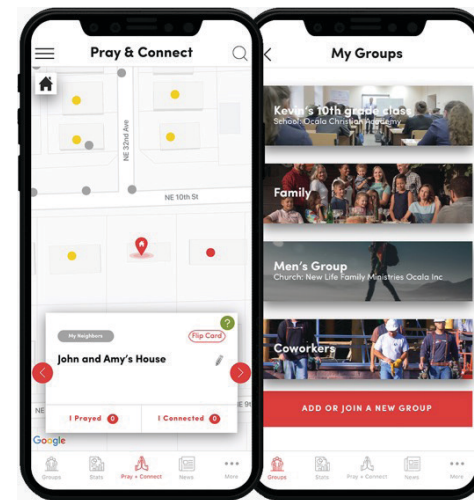
All.America has created an app to track the progress of homes, schools, and individuals being adopted in prayer and connected with across the nation.

God has uniquely placed us where we are to affect change in our community. Imagine if the Body of Christ here worked together to see every person in our city prayed for by name.

We can have a part in seeing that happen by beginning with those around us.

Optional:

- Guide congregation in downloading app
- Show App Tutorial video
(youtube link: www.allamerica.org/apptutorial)
- Have a team ready to assist those who need help downloading the app



All

MAKE A PLAN

Reaching your community begins with defining your “All”

PRAY+CONNECT is a simple way to mobilize your congregation to strategically reach the people around them. Working together with your leadership team, make a plan for how your church will pray for and connect with your community.

STEP ONE: RESEARCH

- What is the population of your area (Include demographics like age, ethnicity, language, etc)?
- How many households?
- How many schools/campuses (private and public)?
- How many churches?

STEP TWO: FAITH GOAL

If _____ congregants adopt _____ people in our city, our church can pray for and connect with _____ in our community.

STEP THREE: LAUNCH DATE

Set a date for your church launch.

Date: _____

You can order these handy participation cards to get everyone to adopt their friends, family and neighbors in prayer.



→ **AllAmerica.org/resources**

All

EVERY SCHOOL

Schools provide one of the greatest opportunities for transforming America as **85.5%*** of the people who come to Christ do so before they finish formal education.

Christian students, adult leaders, educators, churches, and organizations together can reach and disciple this next generation.

Christian Students can use the Finish Line (see below) tools to pray for, reach and disciple other students.

Adult leaders equip and mentor students and can volunteer at schools.

Educators facilitate the sponsoring of Clubs and connecting real needs to churches.

Churches adopt and serve schools, meeting the needs of the families in their community.

Partner Organizations provide resources, training, and best practices.



**Combined findings of
www.Barna.com and
www.Biblica.com.*



PRAYER

Adopting and increasing prayer activity for every school. Praying for every student by name.



COMPASSION

Meeting the needs of the school, staff, and students. Showing God's love in action.



EVANGELISM

Presenting the Gospel personally and publicly to every student. Schools can be ideal locations for after-school Gospel outreaches.



BIBLE ENGAGEMENT

Students studying the Bible together and introducing other students to God's word.

CHRISTIAN COMMUNITY

Christian students coming together to pray, encourage each other, grow and reach out, together.

All

EVERY CHURCH

Mobilizing churches to play their part in the Great Commission

Churches are uniquely placed within a community to affect change. We all want to see people grow in their faith, step out boldly in sharing Jesus and teach others how to follow Him.

PRAY+CONNECT LAUNCH / SERIES

Every church can mobilize the people in their congregation to download and use the app by adopting households and tracking their progress. This will support their desire to pray for and connect with their lost neighbors, friends, family, etc.

PROMOTE & PARTICIPATE

Churches promoting and mobilizing for local outreaches and events is a key to their success. By providing promotional materials, announcements, and opportunities to pray, give and serve with the city-wide effort, churches will stay connected to the overall vision.

How about focusing on each aspect of PRAY+CONNECT for a week – check out the 6 week sermon series.

resources & downloads:
AllAmerica.org/resources

EXAMPLE

How about adopting the area where your church is located? This could be the ZIP Code or a differently defined area that makes sense to your location.

Challenge your congregation to work together **until every household in your area is adopted.**

BREAK IT DOWN

A large area commitment can be daunting. Breaking it down into manageable chunks allows different groups to take ownership – e.g. the business people take on downtown, the moms' group commits to the section with the big park – you get the idea.

WORK TOGETHER

Invite other churches in your area to join in.

Set goals – like making sure every school is adopted (and pray for the people in every business/media outlet/place of government/ etc.)